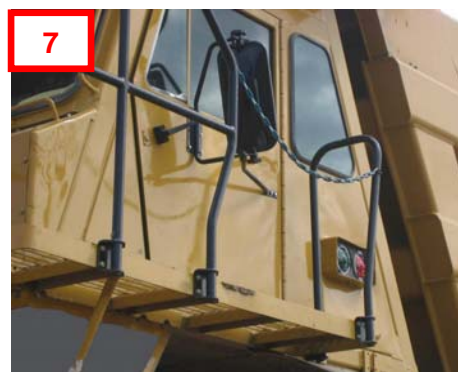
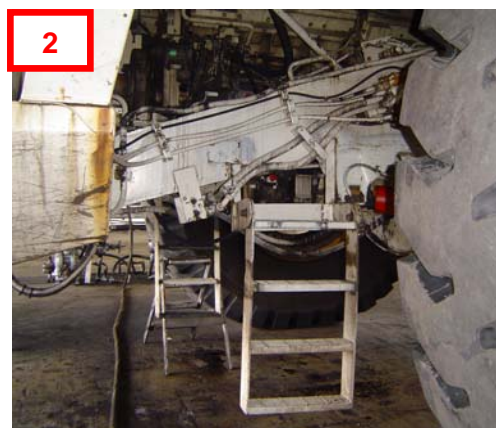


Risks to be mitigated



2. Working at Heights	
Objective	The objective is to minimise the risk of falls from height by operators, service & maintenance personnel, to ALARP, including consideration in design for foreseeable human error.
General outcome	<p>The intended design outcome should include the following:</p> <ul style="list-style-type: none"> All components requiring regular attention for service or maintenance are within safe reach of personnel standing on ground level, permanent platforms, floors or walkways Design hierarchy (in order of preference): <ol style="list-style-type: none"> Provision of service points at ground level; Provision of adequate walkway/platforms/handrails (continuous); Provision of fall restraint (anchor points) for work outside handrails <p>The intended design outcome should consider access to at least the following:</p> <ul style="list-style-type: none"> fire extinguishers lights windows and windshields injectors fluid fill points & breathers oil inspection points & fluid reservoir sight glasses isolation points air conditioners and radio aerials
Risks to be mitigated	<ol style="list-style-type: none"> Risk of falls during access to service machine components eg lights, etc Risk of fall due to lack of fall protection while performing work above 1.8m (6 feet) on the equipment, eg truck engine bay Risk of slips trips and falls at height during access and working from platforms Risk of slips, trips and falls at height during access to service points Risk of falls through ladder openings Risk of materials falling off platforms that are above 1.8m (6 feet) onto persons below Risk of falls from using chains as part of the handrail or ladder opening protection
Examples of industry attempts to mitigate risks	<ol style="list-style-type: none"> Platforms protected by handrails Emergency access openings on handrails fitted with self closing hinged gates with latch; similar protection for handrails (no pinch points); gates that open inwards, not spring loaded and no chains Fall restraint anchor points (for work at >1.8 m above ground) provided and located so the safety line can be attached before the person moves to a position of risk (e.g. elevated tray); installed with a minimum force capacity of 22 kN (2.2 tonnes) (Source: AS1891.4:2000); load tested according to AS1891.3:2000 Removable/restorable access structure for major equipment work Consideration of "roll up" platform access in workshops Toe boards installed on platforms Trip hazards such as deck bolts eliminated

Industry attempts to mitigate risks

